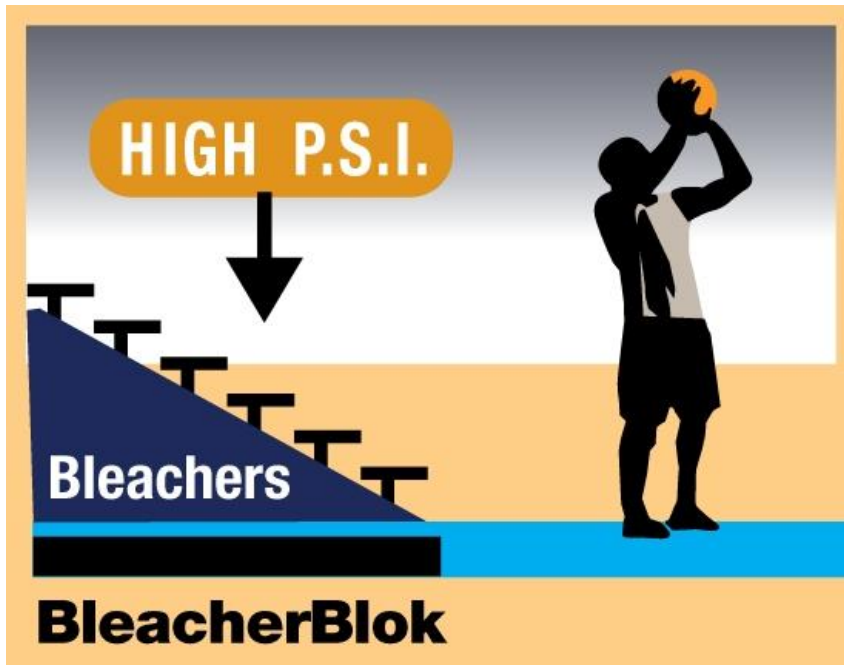




**When extra durability under the bleachers is required**



**...without giving up shock absorption in the court**

## **BleacherBlok SV** for **Taraflex** and **RECREATION**

The perfect solution for maximum indentation resistance where it is needed, without compromising shock absorption on your main court

- Your gym floor can have the safety of Class 2 or Class 3 shock absorption on the playing courts **AND** up to 750 p.s.i. load tolerance under the bleachers.
- BleacherBlok provides a continuous appearance across the entire gym with durability where you need it; below the bleachers.
- BleacherBlok is available for Gerflor's Taraflex and RECREATION courts.



# BleacherBlok SV for Taraflex & RECREATION



<b>BleacherBlok SV</b> by Gerflor	Taraflex or RECREATION sport flooring with a dense support layer in lieu of cushion foam. BleacherBlok provides maximum indentation resistance at targeted areas in the gym: under telescoping bleachers or other heavy equipment
Product name	<b>BleacherBlok SV</b>
Product design	<b>SV: SURFACE over Vinyl</b>
Intended use	For installation adjacent to Taraflex or RECREATION sport flooring for maximum indentation resistance under telescoping bleachers or other heavy equipment
Static load limit	750 p.s.i.
Slab moisture limit	100% RH when installed with Gerfix 100
Product compatibility	Use with REC 60, MU6.2, Sport M Plus
Overall thickness (SURFACE & support layer)	Same total thickness as the Gerflor sport flooring material that will be installed adjacent to it
<b>BleacherBlok SURFACE Top Wear Layer</b>	
Product name	<b>SURFACE</b>
Size	Rolls: 2.1mm thick X 4'-11" wide
Colors	SURFACE wear layer is available in the following wood designs: Maple #6381, Light Cherry #6350, Oak #6375 and Canadian Maple #6062
Internal Adhesive layer (adhering SURFACE over the support layer)	Gerflor T-111
<b>BleacherBlok Vinyl Support Layer</b>	
Construction	<b>Dense Vinyl tiles</b>
Size	Tiles: 4' x 5' / 20 sf per tile
Thickness	Same thickness as the cushion foam on the sport flooring that will be installed adjacent to it
Adhesive to concrete slab	Gerfix 100 for 100% RH tolerance